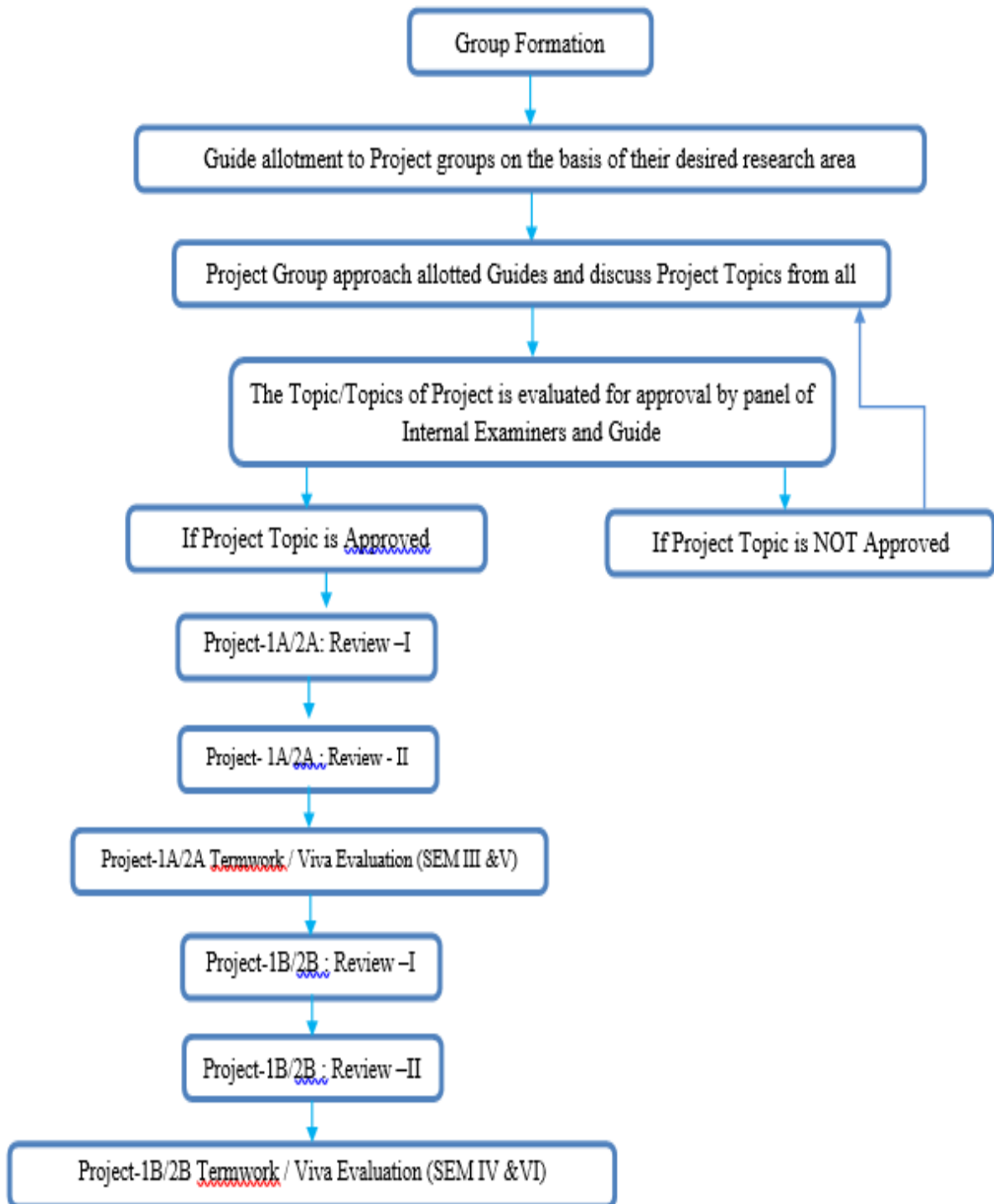


Management Process of SE/TE Year Project

Flowchart of Management Process of SE/TE Year Mini Project



1) **Management Process of SE/TE Mini Project**

➤ **Appointment of Mini Project Coordinator:**

- The Mini Project Coordinator is appointed by the Head of the Department.

➤ **Second /Third Year Mini Project Orientation:**

- At the start of third semester, the Project coordinator conducts a Project Orientation for second year students to brief them about objectives, outcomes, and also the various aspects of the Project work.

➤ **Mini Project Group Registration:**

- Project coordinators share the Google form to the second/third year students to collect information regarding the Project groups, the desired area of research and the guide preference.
- Students have the option to choose the areas in which they are interested to carry out the projects. The different areas which are identified by the project coordinator are Thermal engineering, manufacturing engineering, Design engineering.
- Students are allowed to form group which consists of maximum 4 members.
- The project group members can be from the same or another division of same class.
- If the students are not able to form the group, then the project coordinator will help them to form the group.

➤ **Mini Project Guide allotment:**

- Final allotment of the Guide is done on the basis of the Groups area of interest and the preference for the guide.
- Final Guide allotment for the Project groups is done and displayed by the project coordinator after approval from HOD.

➤ **Mini Project Topic Approval:**

- The Mini Project group discusses their Mini Project topics with their respective guide and finalizes tentative topics.
- The students have to give presentation in front of expert panel and guide. The panel can decide about the approval or rejection of topic.

➤ **Continuous Monitoring:**

- The project activity report is prepared for the continuous monitoring of project work.
- Every week during project slot, students have to meet project guide for queries and suggestions. They should report about the progress in the project work. The project guide will give suggestions towards the improvements of the Mini Project.
- Based on inputs from the guide, students have to complete their Mini project work
- Mini Project Review I and Review II is conducted in both semesters as per the Institutional academic calendar.
- The Project guide and expert panel provide suggestions for Project improvement during the Mini Project review meetings.

➤ **Mini Project Evaluation and Examination :**

- The Mini Project-I is evaluated based on the continuous assessment and the Presentations delivered by the Group, which is assessed by panel of Internal examiners.
- The Mini Project-II is evaluated based on the continuous assessment and the Presentations delivered by the Group, which is assessed by panel of Internal and External examiners.

1) Assessment Criteria and Marking scheme

Assessment of Mini Project-1A and Mini Project- 2A termwork and Mini Project-1A & Mini Project-2A Oral examination is done as per the Guidelines given by the Mumbai University.

MANJARA CHARITABLE TRUST
RAJIV GANDHI INSTITUTE OF TECHNOLOGY, MUMBAI
DEPARTMENT OF MECHANICAL ENGINEERING

Mini Project-1A & 2A Term Work :

Project II should be assessed through a presentation by the student project group to a panel of Internal examiners appointed by the Head of the Department/Institute of respective Programme.

	Assessment Criteria			Total Marks
	Marks awarded by guide/supervisor based on log book	Marks awarded by review committee	Quality of Project report	
Marks	10	10	5	25

Mini Project-1A & 2A- Review 1 & Review 2 :

	Assessment Criteria (Review 1 & Review 2)					Total Marks
	Quality of problem selected & Clarity of Problem definition	Innovativeness in solution , cost effectiveness and social impact	Feasibility of proposed problem solutions & Full functioning of working mode	Contribution of an individual as a member or leader, effective use of skill set	Clarity in written and oral communication, use of standard engineering norms	
Marks	4	4	4	4	4	20

MANJARA CHARITABLE TRUST
RAJIV GANDHI INSTITUTE OF TECHNOLOGY, MUMBAI
DEPARTMENT OF MECHANICAL ENGINEERING

Mini project Oral Examination :

Mini Project 1A & 2A should be assessed through a presentation by the student project group to a panel of Internal and External Examiner approved by the University of Mumbai.

	Assessment Criteria (Oral Examination)					Total Marks
	Quality of problem selected & Clarity of Problem defination	Innovative ness in solution , cost effectiveness and social impact	Feasibility of proposed problem solutions & Full functionin g of working mode	Contribution of an individual s as a member or leader, effective use of skill set	Clarity in written and oral communication, use of standard engineering norms	
Mark s	5	5	5	5	5	25



HOD, Mech